



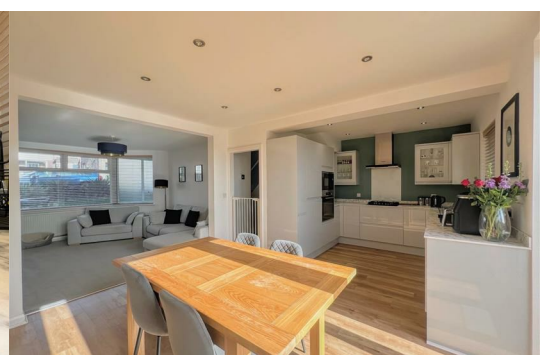
132 Woodford Avenue

Plympton, Plymouth, PL7 4QS

£315,000



Beautifully-presented recently renovated Stanbury-built family home located in the heart of Woodford. The accommodation briefly comprises an entrance porch, hallway, contemporary open-plan lounge/kitchen/diner, 3 good-sized bedrooms & a modern 4-piece family bathroom. Externally there is a generous south-facing rear garden, a lean-to/storage room, garage, front garden & a shared driveway. This property is perfect for those looking for a turnkey home.



WOODFORD AVENUE, PLYMPTON, PL7 4QS

ACCOMMODATION

uPVC double-glazed door, with an inset decorated glass panel, opening into the entrance porch.

ENTRANCE PORCH 2'7" x 9'11" max (0.81 x 3.04 max)

Obscured glass windows either side of the front door to the front elevation. Wooden door with an inset obscured-glass panel opening into the hallway.

HALLWAY 14'1" x 6'0" (4.31 x 1.83)

Laid to Karndean flooring. Doorway leading into the open plan lounge/kitchen/diner. Stairs ascending to the first floor with 2 storage cupboards beneath. uPVC double-glazed window to the rear elevation.

OPEN-PLAN LOUNGE AREA 13'8" x 12'4" (4.18 x 3.77)

uPVC double-glazed bay window to the front elevation.

OPEN-PLAN KITCHEN/DINER AREA 12'6" x 18'8" max dimensions (3.83 x 5.70 max dimensions)

Fitted with a range of matching high-gloss base and wall-mounted units incorporating a composite marble-effect square-edged worktop. Inset one-&-a-half bowl sink with mixer tap. 4-burner gas hob with a wall-mounted extractor hood over. Integrated fridge-freezer, washing machine, dishwasher, microwave and an electric pyrolytic oven. Karndean flooring. uPVC double-glazed window to the rear looking into the lean-to/storage room. uPVC double-glazed patio doors overlooking and leading out to the rear garden.

FIRST FLOOR LANDING 8'1" x 6'11" (2.48 x 2.12)

Providing access to the first floor accommodation. uPVC double-glazed window to the side elevation. Loft access hatch.

BEDROOM ONE 13'9" x 11'6" (4.21 x 3.51)

uPVC double-glazed window to the front elevation. Wardrobe space within the alcoves.

BEDROOM TWO 12'7" x 11'5" (3.85 x 3.49)

uPVC double-glazed window to the rear elevation. Fitted wardrobe.

BEDROOM THREE 9'10" x 6'11" (3.02 x 2.11)

uPVC double-glazed window to the front elevation

FAMILY BATHROOM 7'11" x 6'10" (2.42 x 2.09)

Comprising a semi free-standing square-edged bath, shower cubicle with a mains-fed shower and a monsoon shower head, close-coupled wc and a matching wall-mounted hand basin with mixer tap. Obscured uPVC double-glazed window to the side elevation.

GARAGE 17'1" x 8'9" (5.21 x 2.68)

Up-&-over door. New roof added in 2025 with a 20 year guarantee. Power and lighting. uPVC double-glazed window to the side elevation.

LEAN-TO/STORAGE 9'6" x 4'9" (2.92 x 1.45)

Accessed via the garden and providing storage. Power. uPVC double-glazed window to the rear elevation overlooking the garden.

OUTSIDE

To the front is a low maintenance garden laid to artificial grass together with some raised flower beds. A shared driveway leads to a wooden gate, providing access to the rear garden and garage. A path leads from the shared driveway, along the front elevation to the entrance porch. To the rear there is a fully-enclosed, generous, southerly-facing garden comprising 2 decked seating areas and an area laid to lawn. There is outside lighting and an outside power point.

WHAT3WORDS

///successes.muddy.swaps

COUNCIL TAX

Plymouth City Council

Council tax band: C

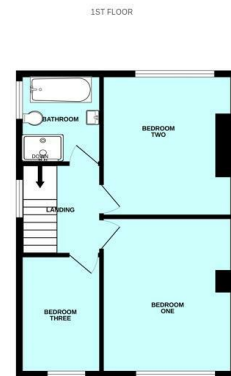
SERVICES

The property is connected to all the mains services: gas, electricity, water and drainage.

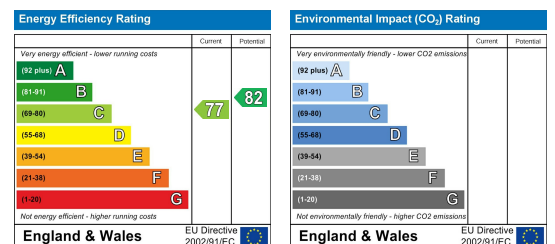
Area Map



Floor Plans



Energy Efficiency Graph



These particulars, whilst believed to be accurate are set out as a general outline only for guidance and do not constitute any part of an offer or contract. Intending purchasers should not rely on them as statements of representation of fact, but must satisfy themselves by inspection or otherwise as to their accuracy. No person in this firm's employment has the authority to make or give any representation or warranty in respect of the property.